

Outcome Measurement Options

David B. Marshall, Ph.D.

DQMA Childrens Administration

Presentation to 2106 Advisory Committee

on Outcomes and Evaluation Issues

January 5, 2010

Performance Measurement in Washington State

- 1995-2000 Regular management reports from CAMIS (mostly case and referral counts)
- 2000-2001 First comprehensive performance measurement system developed, driven by 6 key CFSR measures
- 2001-2004 'Performance Contracts' era; total of 25 measures plus 14 supporting measures reported to Governor, DSHS Secretary, CA Assistant Secretary, and Regional Administrators
- 2004 GMAP begins with Governor Gregoire; Braam settlement; performance indicators proliferate to > 100
- 2005 First integrated measurement framework, developed for Kids Come First Phase II initiative: 9 Vital Indicators, total of 29 measures (not implemented)

Development of the CA Logic Model

- Phase I (2004-2005): Construction of a theoretical logic model for the Government Management Accountability and Performance (GMAP) initiative. Process, strategy, supporting, and early warning indicators were identified for some GMAP outcomes; not all outcome domains important to the agency were included in GMAP.

- Phase II (2007-2008): Identification of Priority Performance Measures (PPM)
 - Critical outcome domains of safety, permanency, well-being and aftercare
 - Evaluated practice and research knowledge to identify: Practices associated with better outcomes (Strategies); Short-term predictors of favorable long-term outcomes (Components); Short-term predictors of poor long-term outcomes (Early Warnings)

PPM Framework

- 6 outcome domains measured by 8 component indicators
- 11 strategy indicators for the outcome domains
- 3 early warning indicators for 3 of the domains
- Total of 21 indicators (18 implemented in CAMIS)

PPM Framework

Indicator	Category	Long-Term Measure	Indicator Definition
CPS response time	strategy	Recurrence of maltreatment	% of victims in CPS referrals with a face-to-face visit within 24/72 IFF policy timeframes
<i>Early Intervention</i>	strategy		% of families with unfounded or inconclusive referrals (and no prior founded) who accept services
<i>Safety after founded referral</i>	early warning		% of victims with a prior founded CPS referral with any new info only, unfounded, or inconclusive CPS referrals within the next 6 months
<i>Safety of children with in-home services</i>	component		% of children on voluntary cases during the quarter without a founded finding of maltreatment or a removal (placement) within the next six months
Timely and stable placement with relatives	strategy	Placement stability	% of children in care for at least 7 months who were placed with relatives within 30 days of entering care, and remained with that relative for at least 6 months
Sibling group placement	strategy		% of children in regular family foster care in placement with some or all other removed siblings
<i>Social Worker visitation</i>	strategy		% of children in placement who were visited by SW within the last 40 days
Placement movement	component		% of children in placement at the beginning of the quarter who remained 'stable' (didn't move a 2 nd time) during the quarter
Stability for adolescents	strategy		% of transitioning youth with no placement moves during their last year in foster care
Repeat running	component		% of youth in placement with a run history at the beginning of each quarter without a repeat run event by the end of the quarter

Indicator	Category	Long-Term Measure	Indicator Definition
Availability of foster home beds	component /strategy	FH Recruitment and Retention	ratio of youth utilizing licensed foster care to licensed bed capacity, by geographic location
Maintaining family connections	strategy	Placement Re-entry	% of children in placement > 60 days who were visited by parent within the last 30 days
Placement re-entry	component		% of children entering placement in their first episode
Safety during trial home period	early warning		% of children with any ARS, CPS or FRS referrals (accepted or info only) during the first 6 months following reunification
Exits from long-term care	component	Permanency Timeliness	% of children/youth in care >2 years at the beginning of each quarter who exited care with plan completed by the end of the quarter
Timely Reunification	component		Median LOS of children reunified during each quarter
Progress to Reunification	early Warning		% of children with permanent plan of reunification <i>not</i> reunified within 9 months
Timely CHET completion	component	Permanency	% of children with CHET screenings completed within 30 days of entry
Educational Outcomes	strategy	Success of Youth Transition to Independence	not defined yet
Youth Receiving ILS	strategy		% of eligible youth population receiving ILS
Acquisition of Independent Living skills	strategy		% of assessed population achieving benchmark

Contemplated PPM Revisions

- Greater consistency with Federal CFSR definitions of measurement populations
 - Exclude LOS < 8 days for some measures
 - 15-month subdivision of children in care
 - TRH adjustment of LOS for some measures
 - Definition of ‘super-episodes’
- Greater consistency with other stakeholders
 - GMAP, Braam, Racial Disproportionality
 - *Critical* for PBC-2106
- Enhance Measurement of Well-Being

Suggestions: Safety Measures

- Percent founded to founded (Victim recurrence): Covered by PPM
- Percent unfounded to founded: Add (will be very similar to PPM of % unfounded with a later founded)
- Foundeds per care-year by type of perpetrator: Mixes low-N foster parent abuse and parental abuse during visits; replace with more targeted PPM of safety during TRH
- % Founded after permanency, by type: Check; likely very similar to PPM for placement re-entry rate (could readily include exit type breakout)

Suggestions: Permanency

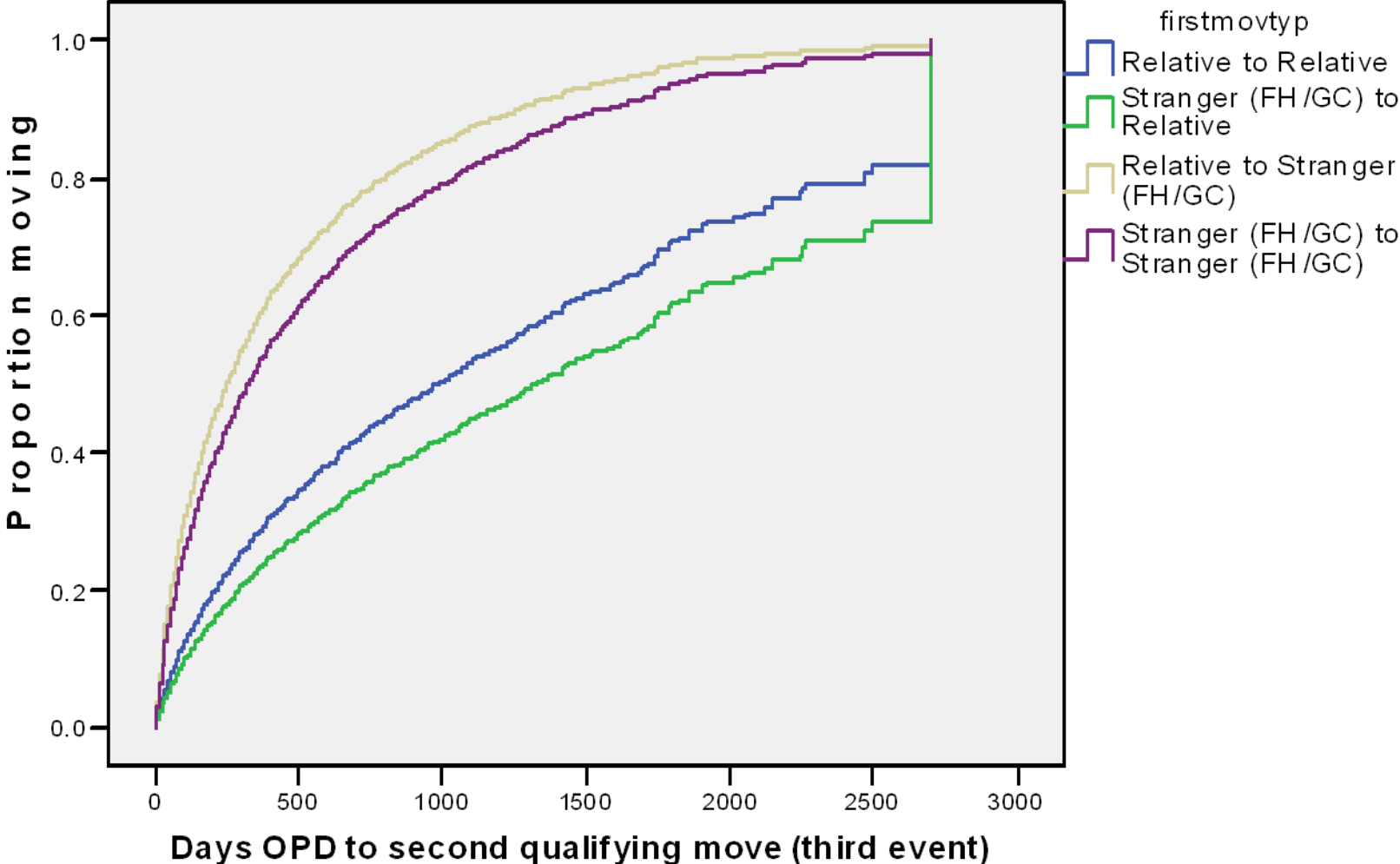
- Exits to permanency: Covered by PPMs and basic descriptives (? discharge to relative)
- Exits to permanency, LOS > 15 months: Modify PPM on exits of children in long-term care
- Exits to non-permanency: Breakouts; covered; low N will make statistical comparisons shaky
- Exits to non-permanency, LOS > 15 months: ditto
- Re-Entry by permanency type: covered by PPM
- Time to Adoption after TPR: Add

Suggestions: Stability

- Percentage with 2 or more moves in first 6 months of care, by nature of move: Similar to Federal 12-month measure, but better due to shorter timeframe (initial instability is concentrated in first few months); *increase focus* on monitoring and reducing relative to non-relative moves (see chart)
- Percentage with 2+ moves within first 6 months of care placed with relatives after last move: A critical component of later stability and other outcomes, but likely adequately covered by PPM on timely and stable placement with relatives
- Average N of moves per care-year for children in care > 6 months: Check; likely redundant (statistically similar) with PPM on % children remaining stable – trade-offs here; age-group problems with using average; but like the idea of restricting this measure to children in care for > 6 months; change PPM
- Percentage of tribal members in care where all ICWA requirements were met: Case review?

Stability and Movement Type

Rate of Movement into Third Event



Suggestions: Well-Being Measures

- Percentage of children initially placed in a family settings: Not likely diagnostic of later stability or well-being; but can add descriptive breakout to PPM
- Percentage of children placed in family settings by time spent in care: related PPMs use breakout of type of care, defined as 85% or more of total time in care to date. Finer breakouts not likely to be informative.
- Percentage of children placed with siblings: Covered by PPM (breakout into none, some or all)

Suggestions: Well-Being Measures

- Percentage of children entering out of home care with timely assessments: Covered by PPM (expand/revise when possible)
- National Youth in Transition database measures (outcomes at ages 17, 19, 21): ??
- N psychiatric hospitalizations, incarcerations, OTRs for children 12 and older in out of home care: Add descriptive to PPM on stabilizing run-aways

Additional Well-Being Measures

- Continue and expand work on composite indicator of behavioral problems
- Measure(s) of change in level of restrictiveness in placement setting (FAMLINK data should allow a more accurate and detailed scale)
- Re-examine placement *stabilization*
- Future: develop behavioral problem severity scales from service data; measure changes in severity