

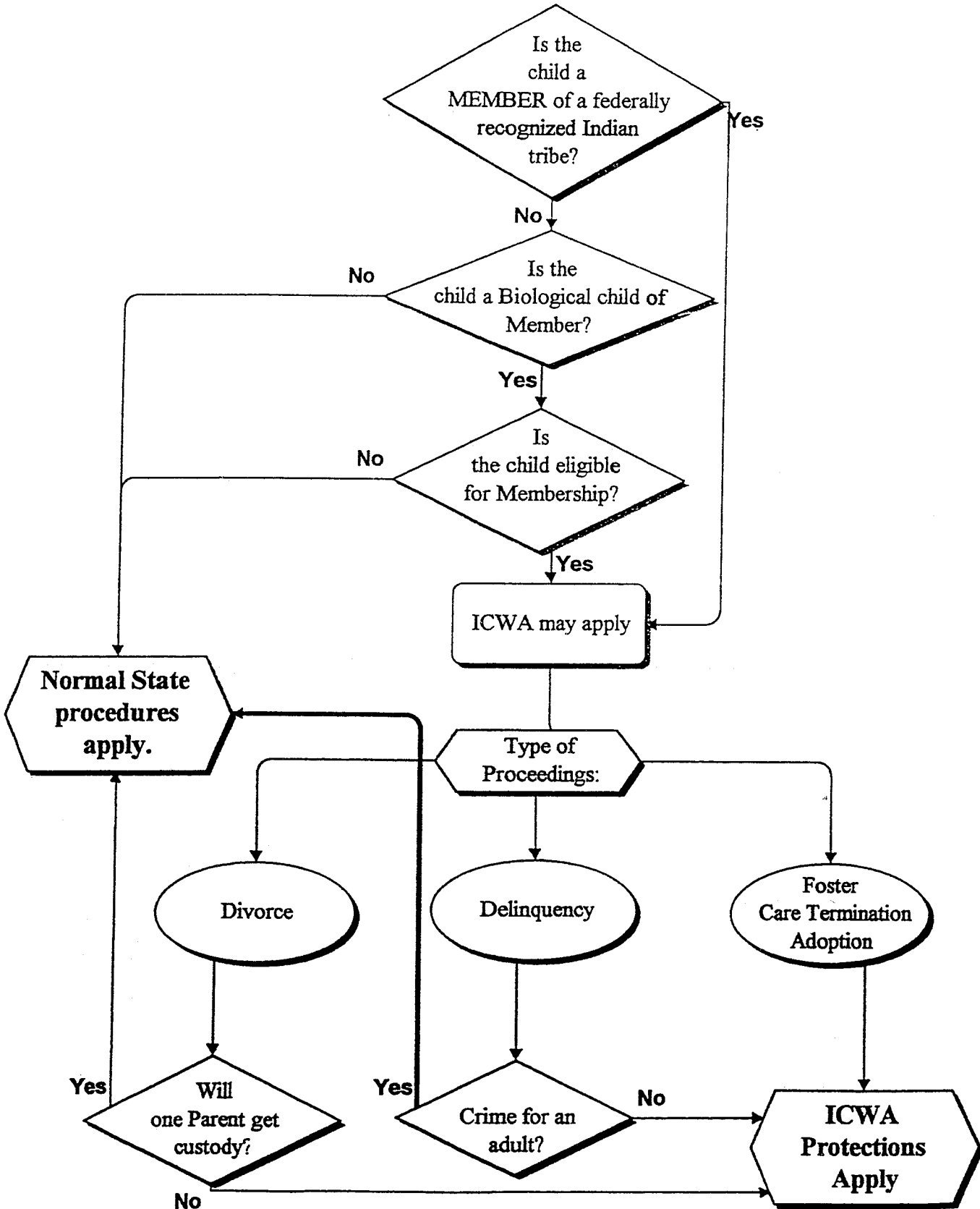
**DISCLAIMER:**

The following flow charts are from *Native American Resource Directory for Juvenile and Family Court Judges*, published by the National Council of Juvenile and Family Court Judges (NCJFCJ), Permanency Planning for Children Dept., ©2003.

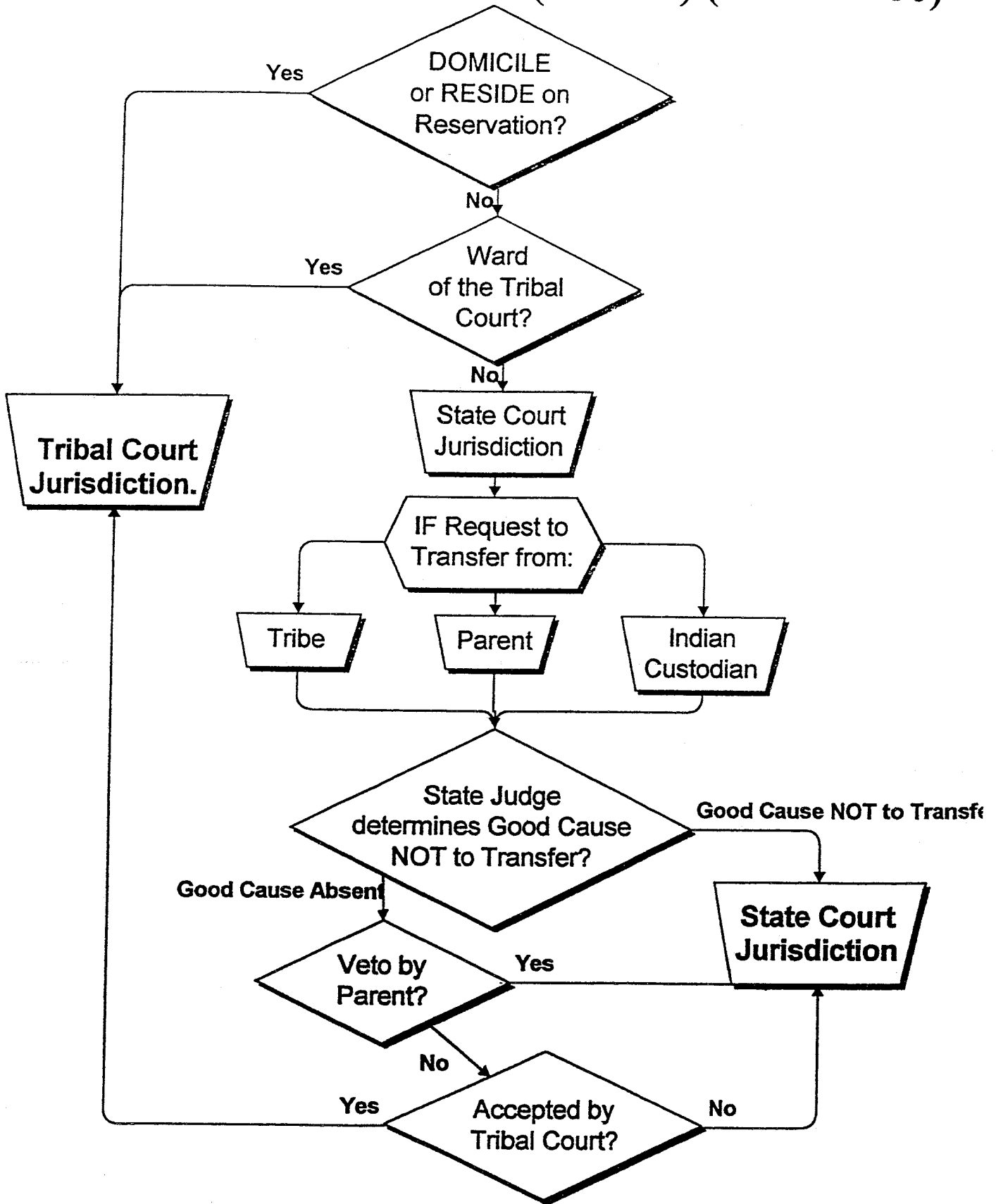
Reproduction of any part of this publication must include the copyright notice and attribution to *Native American Resource Directory for Juvenile and Family Court Judges*, published by the National Council of Juvenile and Family Court Judges, Reno, Nevada. © 2003, National Council of Juvenile and Family Court Judges. All Rights Reserved.

- Will the ICWA apply to this case?
- Jurisdiction and the ICWA (sec 101) (non-P.L. 280)
- Notice requirements of ICWA (sec 102)
- Checklist for removal or termination (sec 102)
- Placement preferences (sec 105)
- Voluntary Consent to TPR
- Withdrawal of consent (sec 103)
- Emergency removal (sec 112)

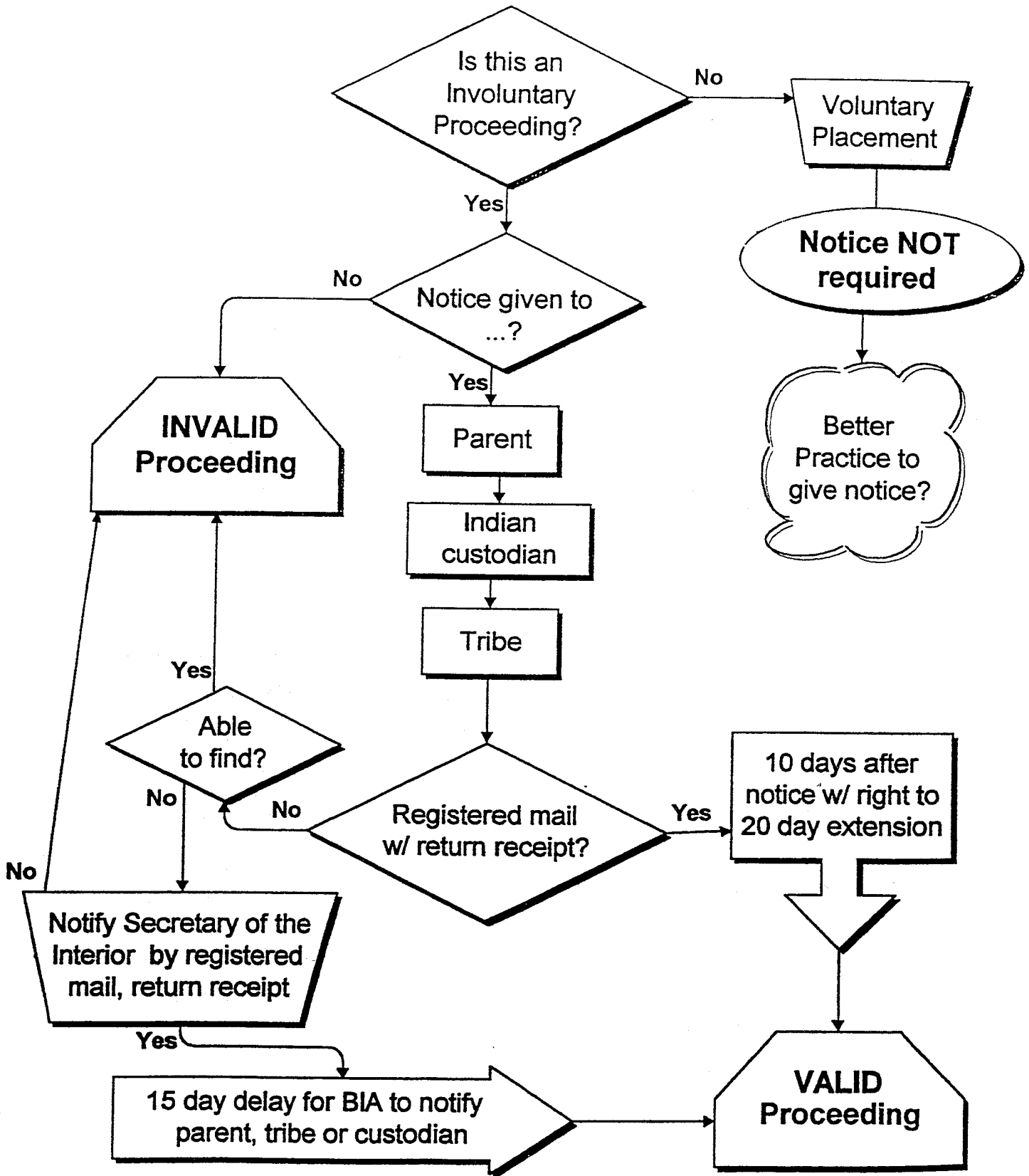
# Will the ICWA apply to this case?



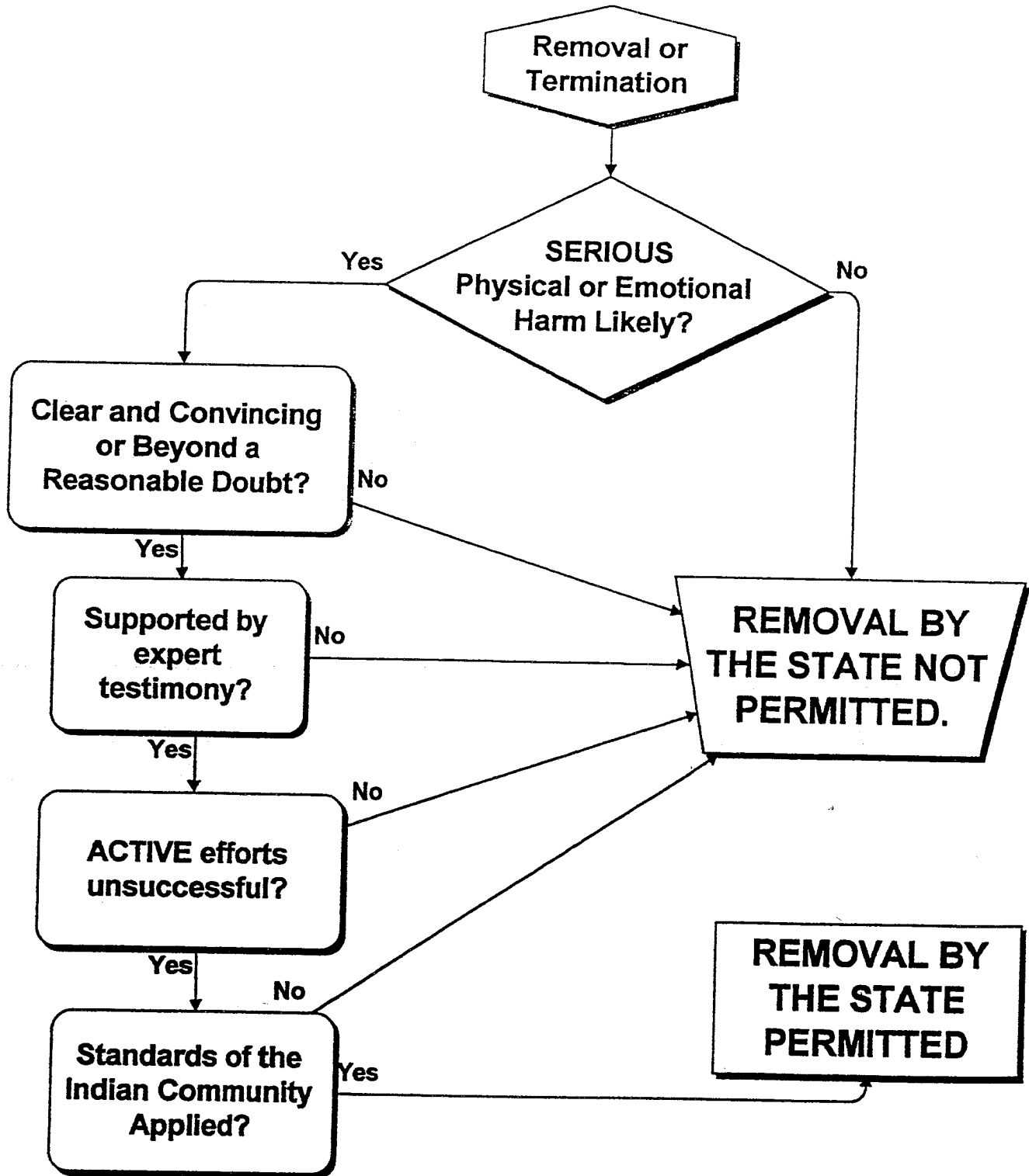
# Jurisdiction & the ICWA (Sec 101) (non PL 280)



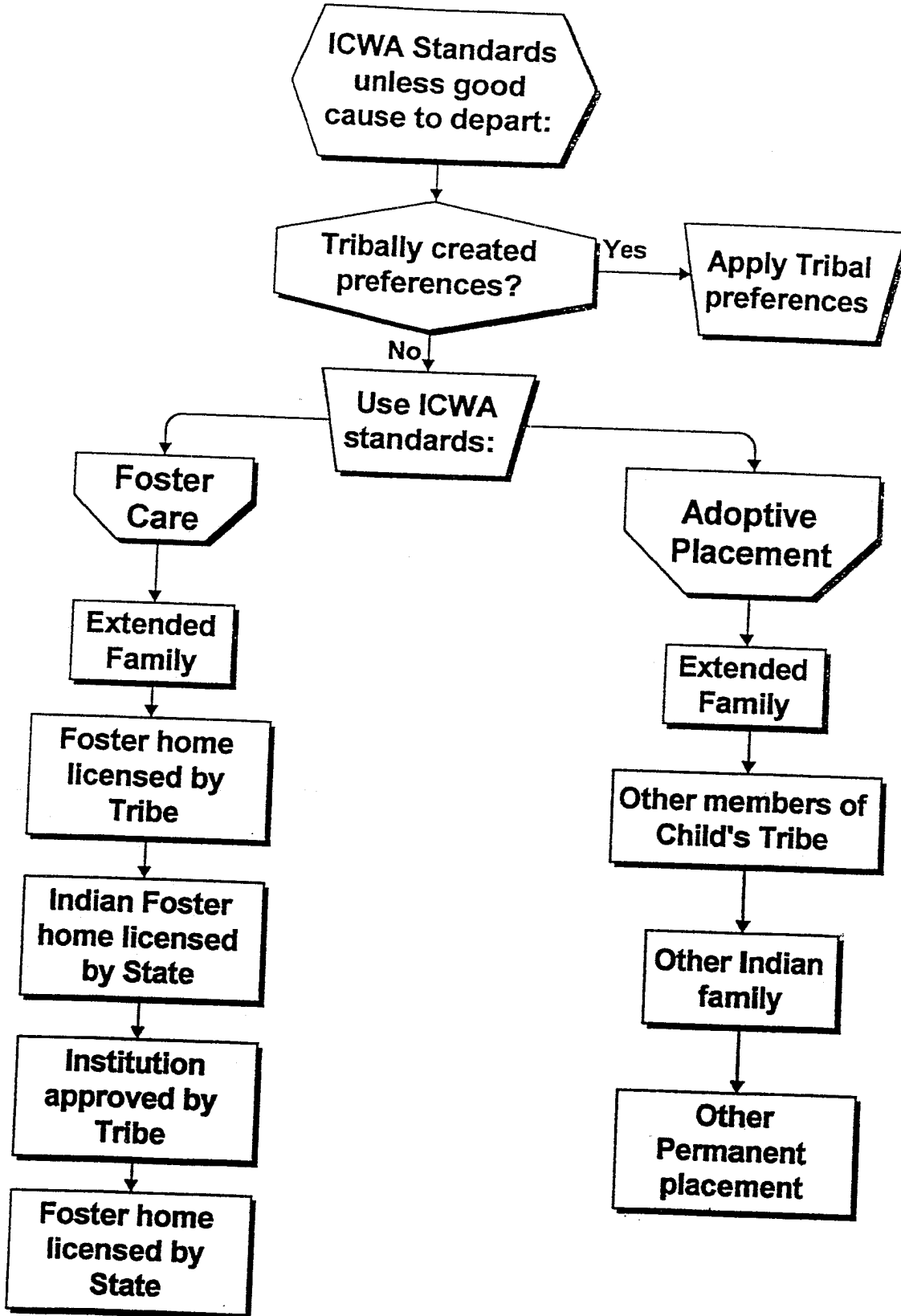
# Notice Requirements of ICWA (Sec 102)



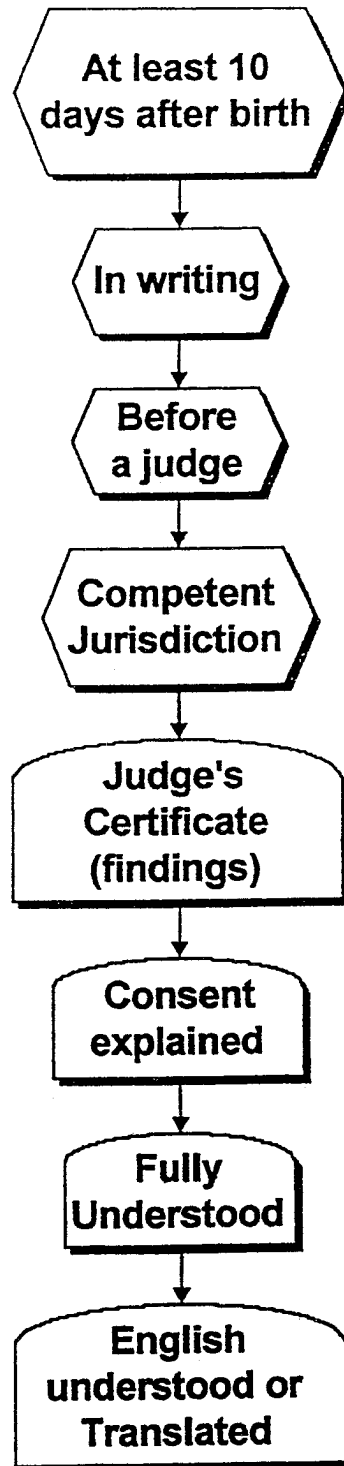
# Checklist for Removal or Termination (Sec 102)



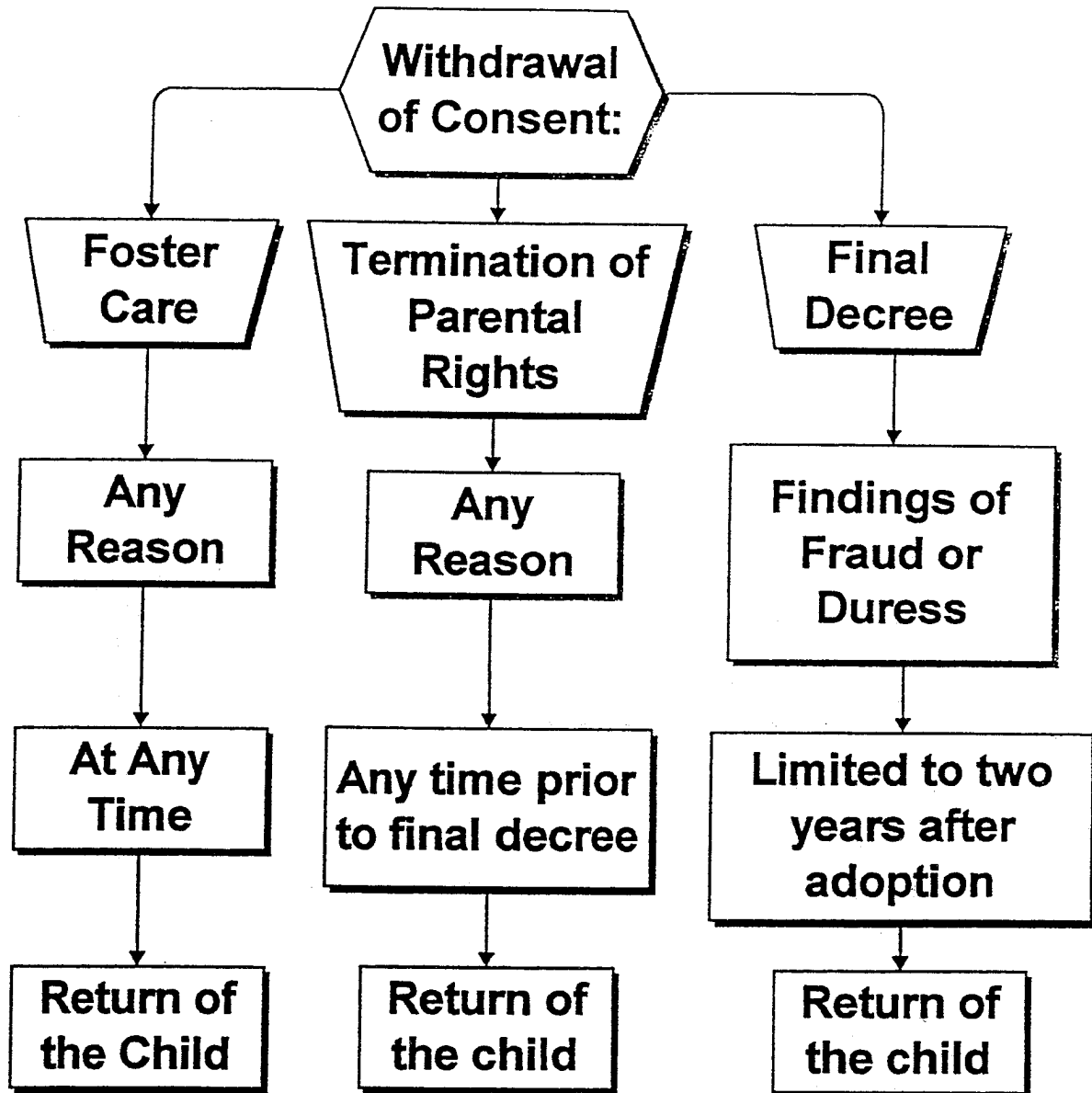
# Placement Preferences (Sec 105)



# Voluntary consent to TPR



# Withdrawal of Consent (sec 103)



# Emergency Removal (Sec 112)

